

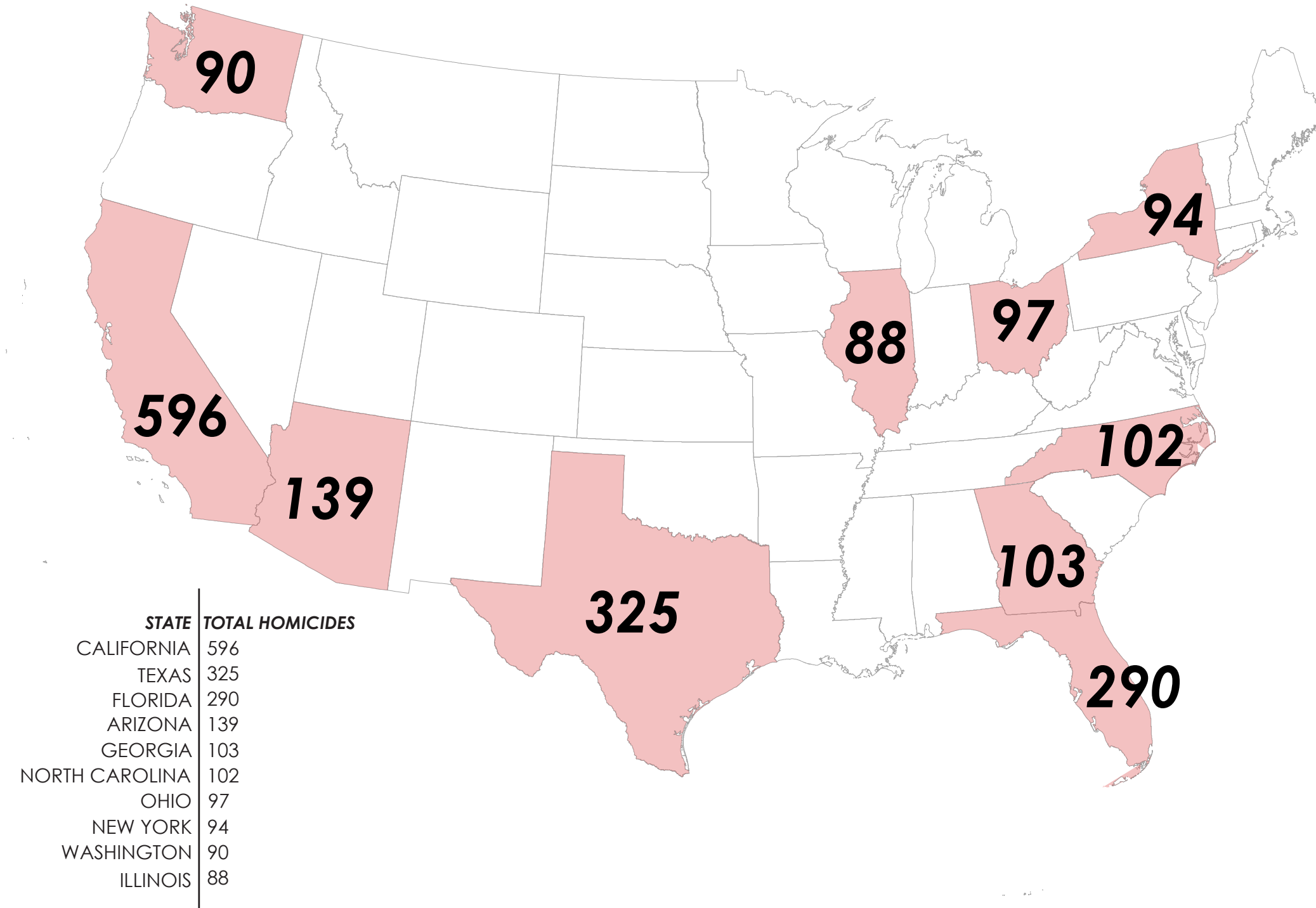
# Race & Policing in America

Documenting Police Use of Deadly Force

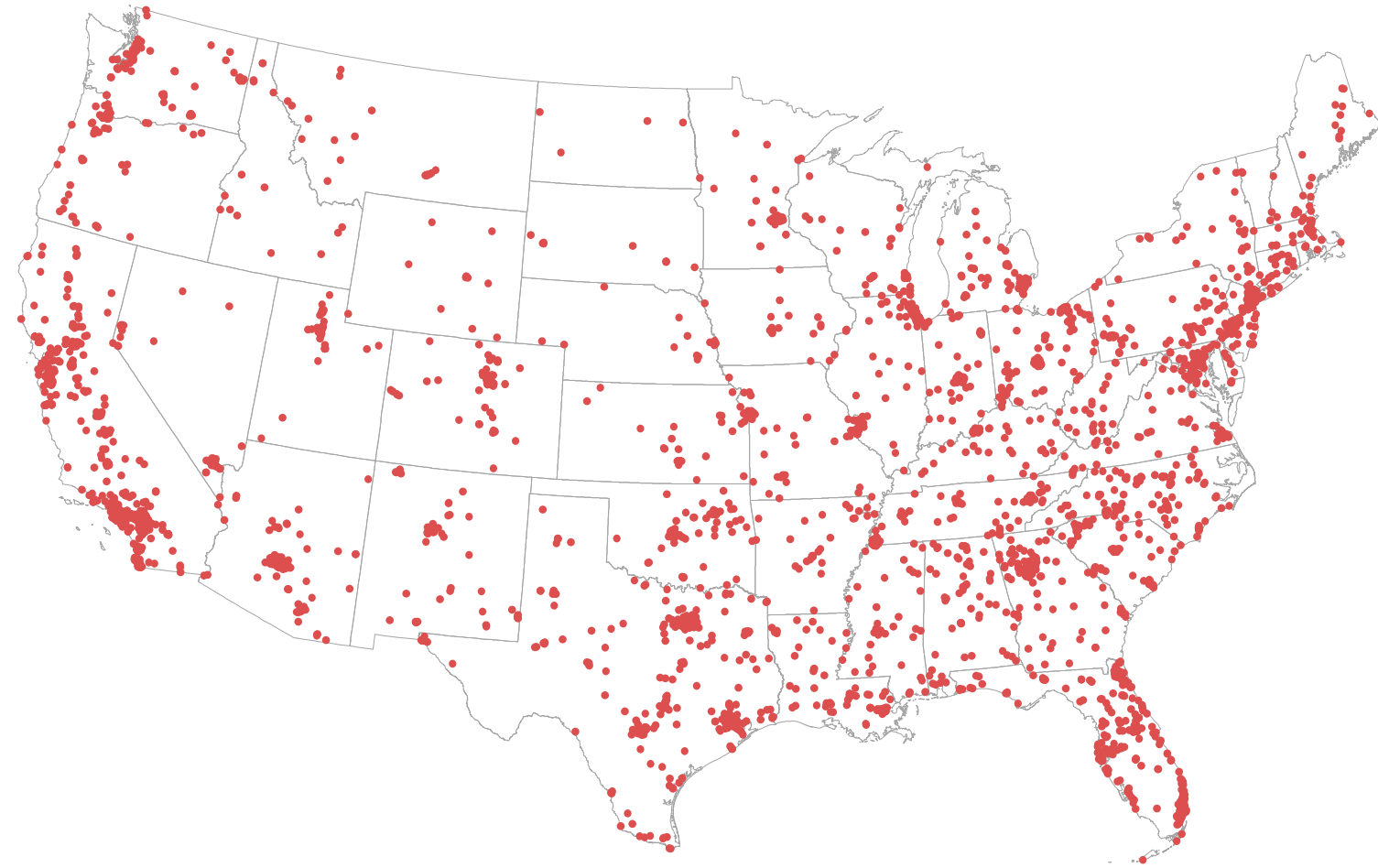
FRANK ROMO | 2019  
contact@frankromo.com  
www.romogis.com

A Product of RomoGIS Enterprises

State Map of Police Related Fatalities 2013-2015



# Fatal Encounters with Law Enforcement 2013 - 2015



**3485**  
**TOTAL**  
people killed by  
police 2013 - 2015



Race	Total Fatalities
White	1522
Black	949
Latino	571
Unknown	335
Asian	68
Native American	27
Pacific Islander	13

Law Enforcement Agency	Total Fatalities
Los Angeles Police Department	65
New York Police Department	49
Chicago Police Department	45
Phoenix Police Department	42
Houston Police Department	36

# Police Related Fatalities: County Level Analysis 2013 - 2015



Los Angeles County California	Maricopa County Arizona	Cook County Illinois	Harris County Texas	Miami-Dade County Florida
Population: 10.2 Million	Population: 4.0 Million	Population: 5.2 Million	Population: 4.3 Million	Population: 2.6 Million
Area: 4,751 Square Mi.	Area: 9,224 Square Mi.	Area: 690 Square Mi.	Area: 1,703 Square Mi.	Area: 1,946 Square Mi.
<b>Total Fatalities:</b> L.A. County - 167 People City of L.A. - 63 People	<b>Total Fatalities:</b> Maricopa County - 85 People City of Phoenix - 48 People	<b>Total Fatalities:</b> Cook County - 59 People City of Chicago - 44 People	<b>Total Fatalities:</b> Harris County - 58 People City of Houston - 50 People	<b>Total Fatalities:</b> Dade County - 49 People City of Miami - 27 People

The counties listed above accounted for a total of 418 incidents of police related deaths between 2013 and 2015. These counties vary in geographic size and population size, making it difficult to draw statistical conclusions on a county by county comparison. Each of these counties were examined individually to determine which populations were affected the most by police violence. Despite the differences in geographic size, each of these counties is home to a major metropolitan city, which in most cases, accounts for more than half of all fatal encounters within the county. For instance, over 90% of all incidents in Harris County, Texas occurred within the Houston city limits. Aside from the City of Los Angeles, every other county's major metropolitan city represented for an overwhelming amount of the reported deaths within the county. This finding reveals that the use of fatal force by police officers is primarily an urban phenomenon that occurs in dense, highly urbanized areas.

Large metropolitan areas like these often have larger populations and, on average, many more emergency response situations which often results in a substantially large police force. However, a sizeable police force should not automatically translate to higher rates of officer involved fatalities. This analysis seeks to offer additional data points about like racial segregation and diversity to better understand how these external factors may contribute to the high rates of police violence in these counties. In order to learn more about the spatial distribution of police violence in each of these counties, an in-depth analysis was performed to examine the population demographics and racial segregation in each of these counties. The following analysis documents incidents of police violence for each county and examines the spatial distribution of this phenomenon in relation to racial segregation.

# Los Angeles County, CA

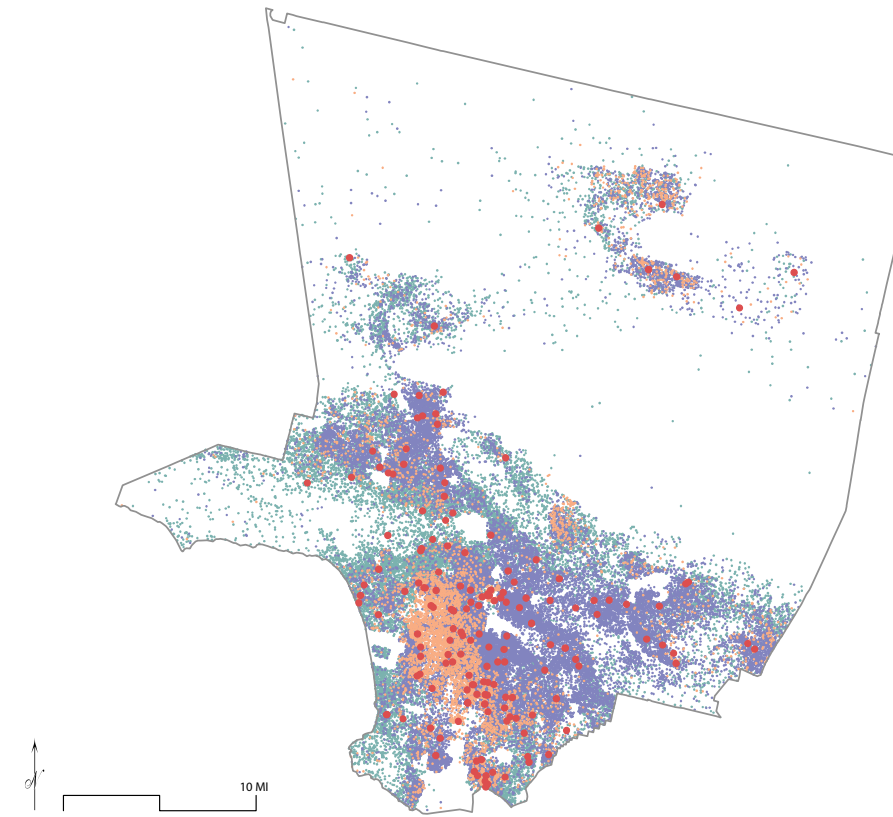
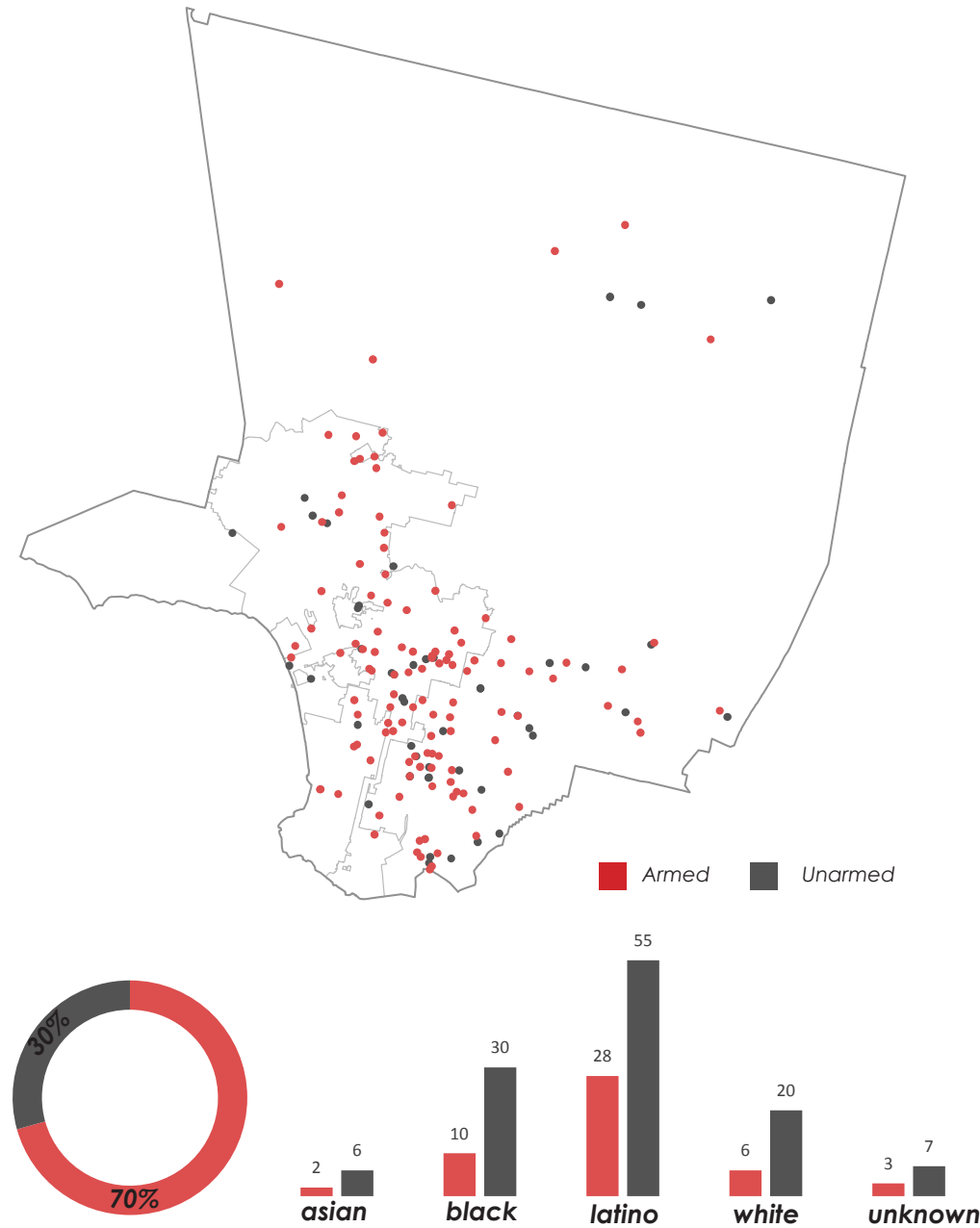
Los Angeles County is the largest metropolitan area in Southern California, with a population of over 10 million people. Los Angeles County is made up of 88 cities and 137 non-contiguous unincorporated areas that span over 4,000 square miles. Compared to the other counties in this study, Los Angeles County is substantially larger in both population and geographic size.

Between the years 2013 and 2015, **Los Angeles County accounted for a total of 167 police-related fatalities, the highest count within the United States.** Los Angeles County was the only municipality in the U.S. to report over 100 incidents of police violence within the three-year period. Approximately 62% of all the reported incidents in L.A. County occurred outside of the Los Angeles city limits. Los Angeles County is the only county in this study whose major metropolitan city (L.A. City Proper) did not account for a majority of the police-related deaths.

According to this dataset, 118 of the 167 or approximately 70% of victims in Los Angeles County were armed at the time of death. This statistic is slightly less than the national average of 77% of victims being armed at the time of death. Diverging from national trends, **Latinos accounted for over 50% of lethal force incidents in L.A. County.** Although Latinos represent a large portion of the county's racial demographic, these statistics still exhibit an overrepresentation of Latinos as victims of lethal force.

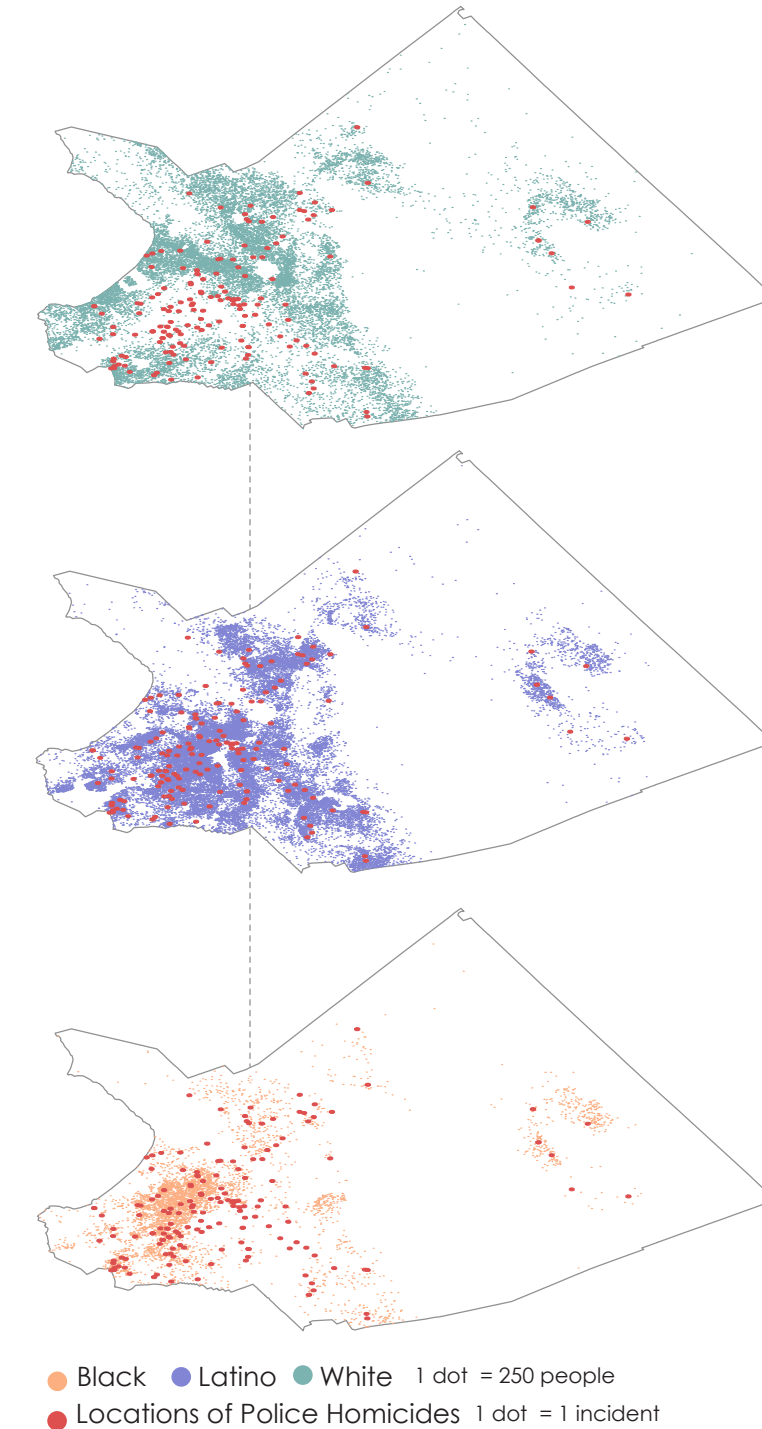
**There were three law enforcement agencies that accounted for approximately 82% of the total number of police related deaths in Los Angeles County.** The three law enforcement agencies with the greatest number of fatalities were the Los Angeles Police Department (65 total fatalities), the Los Angeles Sheriff's Department (58 total fatalities) and the Long Beach Police Department (14 total fatalities) over the same three-year span.

In L.A. County Latinos accounted for over 50% of lethal force victims



## Racial Segregation and Police Violence

Examining racial segregation in L.A. County reveals key relationships between the spatial distribution of police related fatalities and communities of color. These maps show the extreme racial segregation in L.A. County and reveals that **most fatal encounters occurred in black and Latino neighborhoods.** While most of the incidents are dispersed throughout the county, there tends to be a clustering of incidents in the south and south eastern parts of Los Angeles County where there are majority Black and Latino residents. The clustering of incidents in South Los Angeles includes **an overrepresentation of police fatalities in the majority minority cities of Compton and Long Beach.** Both municipalities are majority minority cities, meaning that an overwhelming majority of their population identify as non-white. In fact, 80% Compton's residents and over 50% of Long Beach's residents identify as either Latino or African American. These findings show that diverse, urban communities of color are disproportionately affected by incidents of lethal force in L.A. County.



# Maricopa County, AZ

Maricopa County is the most populous county in the State of Arizona, with an approximate population of 4 million people. Maricopa County is made up of 24 cities and towns, that spans over 9,000 square miles, making it the largest land area of all the counties compared in this analysis.

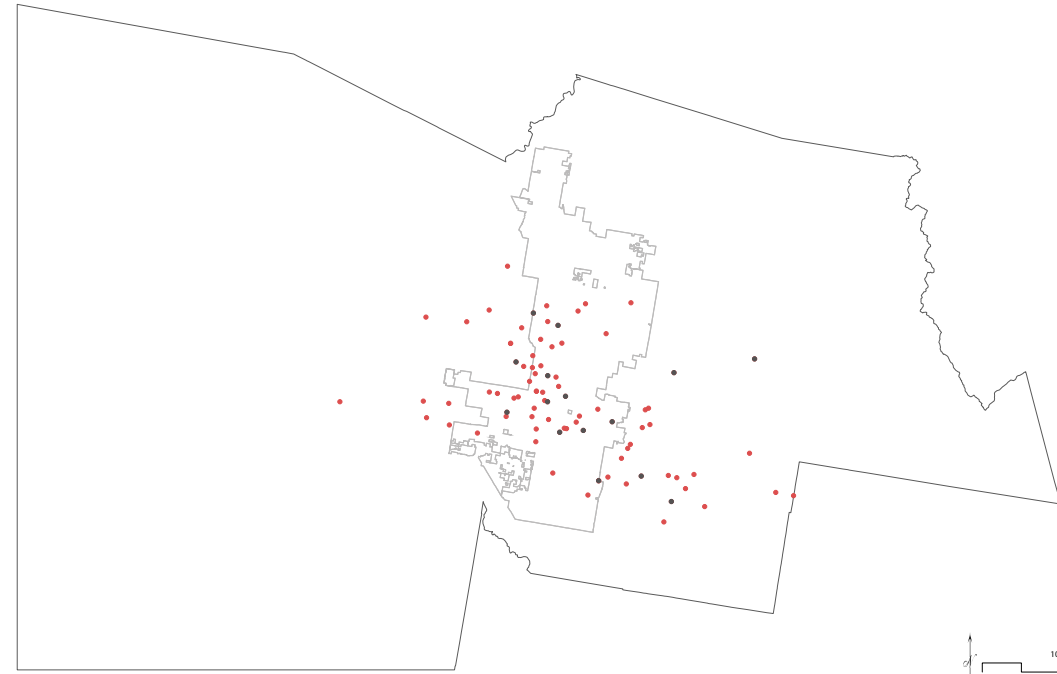
Between the years of 2013 and 2015, Maricopa County reported 85 total fatal incidents, the second highest count in the nation. Different than most counties in this analysis, **an overwhelming percentage of victims or about 82% of people killed by police were armed at the time of death.** The number of armed victims in Maricopa county was substantially higher than the national average of 77%. This finding might indicate a direct connection with Arizona's liberal gun laws and its affiliation as an open carry state.

Most of the incidents occurring in Maricopa County are concentrated within the Phoenix city limits. In fact, **the City of Phoenix accounted for 48 of the 85 total fatalities between 2013 and 2015, or about 56% of the total deaths within the entire county.** In Maricopa County, one police agency accounted for about 50% of all the total deaths. The Phoenix Police Department killed 42 of the 85 people in Maricopa County, causing some concern about the level of force used within the city limits and by the local police department.

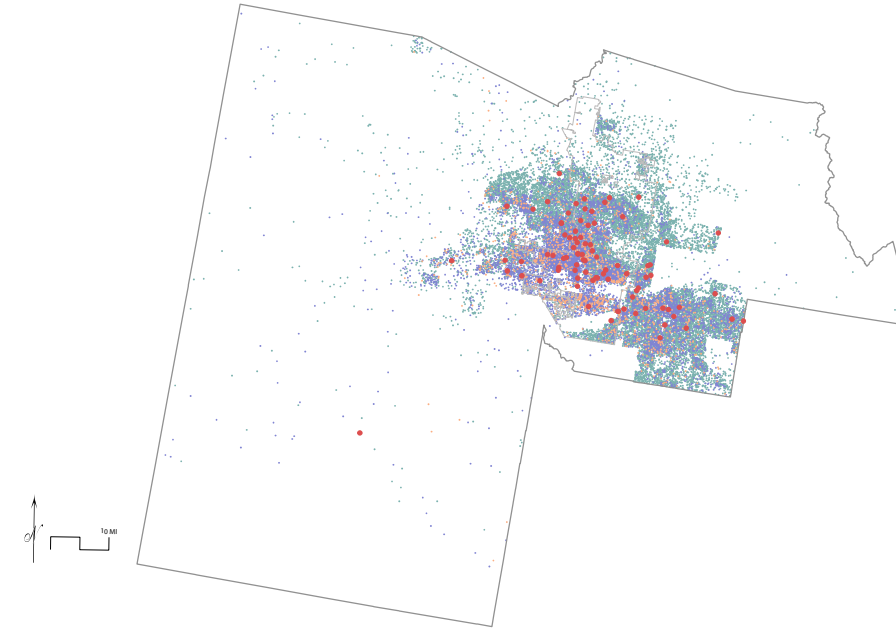
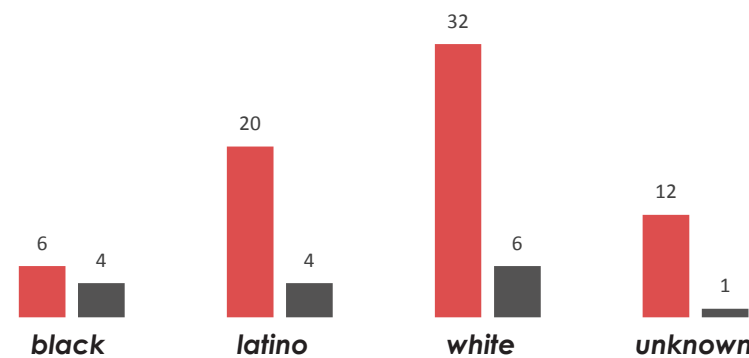
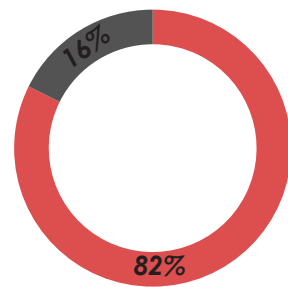
## Fatalities by Police Department

- Phoenix Police Department - 42
- Mesa Police Department - 7
- Maricopa County Sheriff - 5

The Phoenix Police Department accounted for about 50% of all deaths within Maricopa County.



■ Armed ■ Unarmed

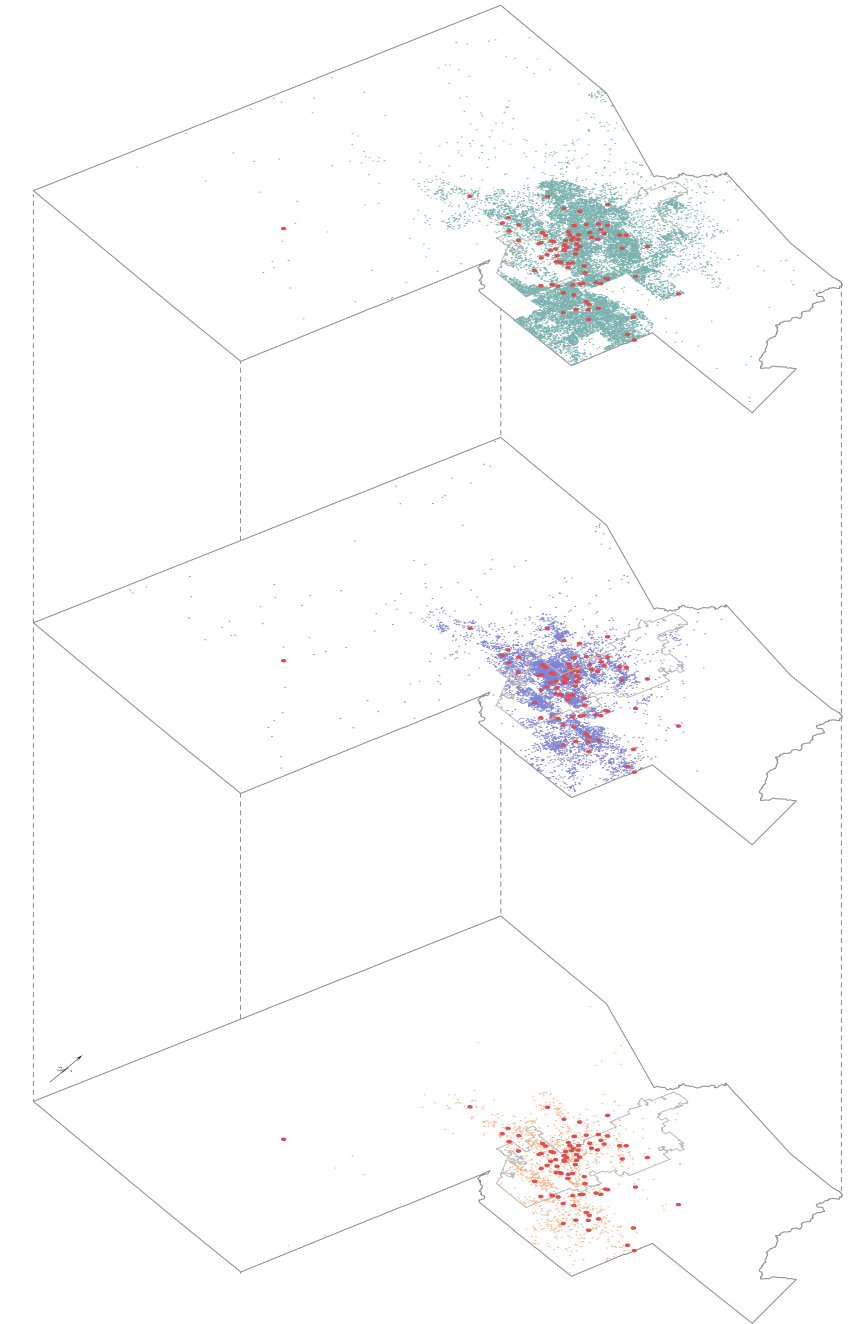


42 of the 85 deaths in Maricopa County, or about 56%, occurred within the city of Phoenix.

## Racial Segregation and Police Violence

Examining the racial makeup of Maricopa County reveals interesting spatial arrangements as it pertains to incidents of police related fatalities. Unlike many counties in the United States, Maricopa County does not show extreme or distinct racial segregation. Thus, it is difficult to assess if there is a strong relationship between neighborhoods of color and police violence.

Maricopa County is an outlier when compared to the other counties in this analysis. The map series reveals that there is a substantially larger white population living in Maricopa County. **In fact, the white population comprises 70% of the county population but only accounts for 44% of people affected by police violence.** While the maps do not provide insight on the relationship between racial segregation and incidents of police violence, they may lend insight on how minority communities still overrepresented the number of victims killed by



● Black ● Latino ● White 1 dot = 250 people  
● Locations of Police Homicides 1 dot = 1 incident

# Cook County, IL

Cook County is the second largest county in this analysis with a population size with over 5.2 million residents. Cook County consists of 135 municipalities that span a land area of 690 square miles.

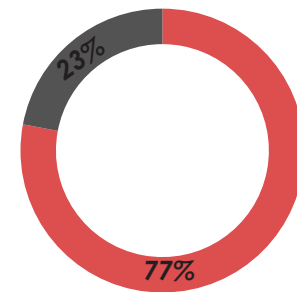
Between the years 2013 and 2015, **Cook County accounted for a total of 59 police-related fatalities**. Of these 59 incidents, about 77% of them were of armed victims. This statistic is reflective of the national level dataset, which also indicates that approximately 77% of all victims were armed at the time of death.

The majority of deaths within Cook County occur within the city boundaries of Chicago. In fact, **the City of Chicago accounts for approximately 75% of the total number of incidents in Cook County, with a count of 45 total fatalities**. This finding is on par with many other metropolitan cities and may be attributed to increased gang-related activity, over-policing and racial profiling in the city. Like many other cities, further contextual analysis is required to better understand the nuances of fatal force in Chicago.

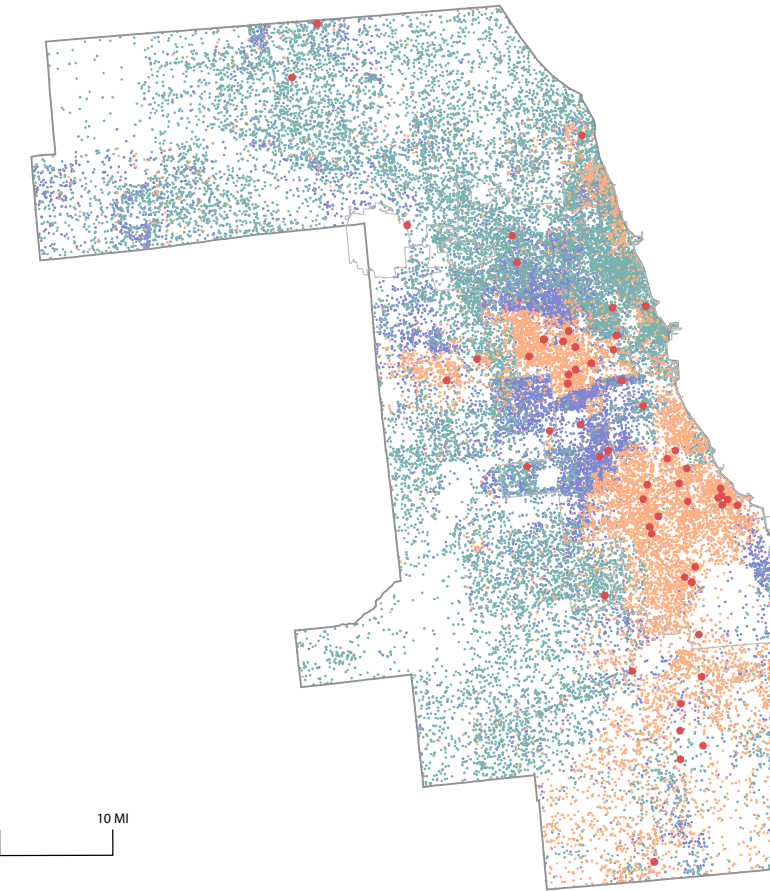
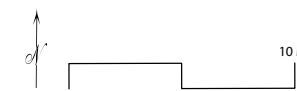
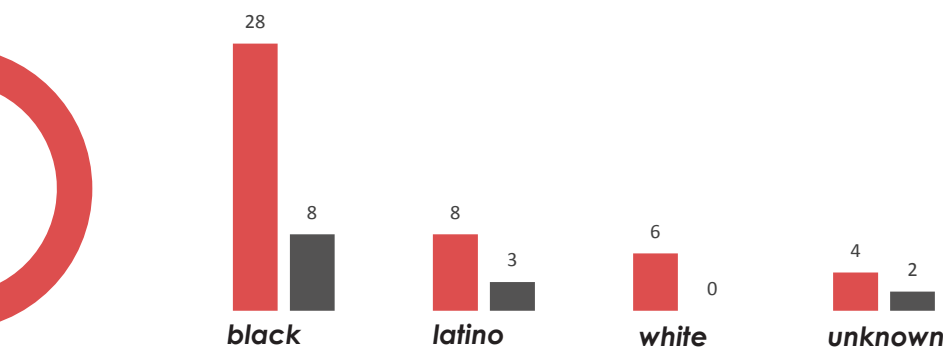
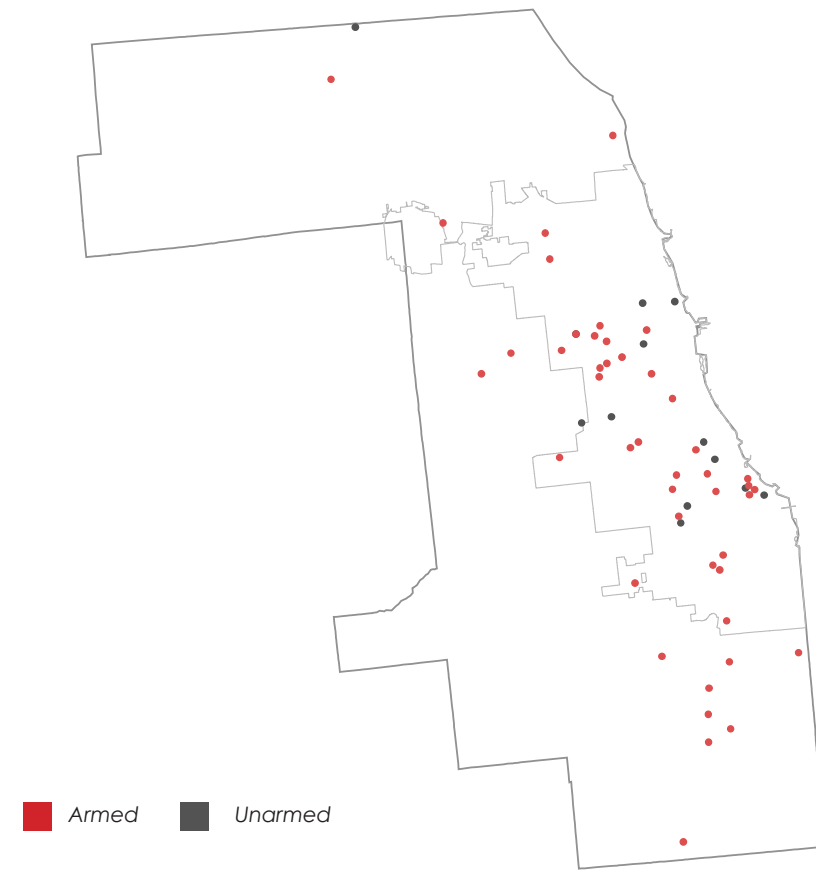
**In Cook County, African-Americans accounted for 36 out of the 59 fatalities or approximately 61% of all police related fatalities.**

## Fatalities by Police Department

*Chicago Police Department - 42*

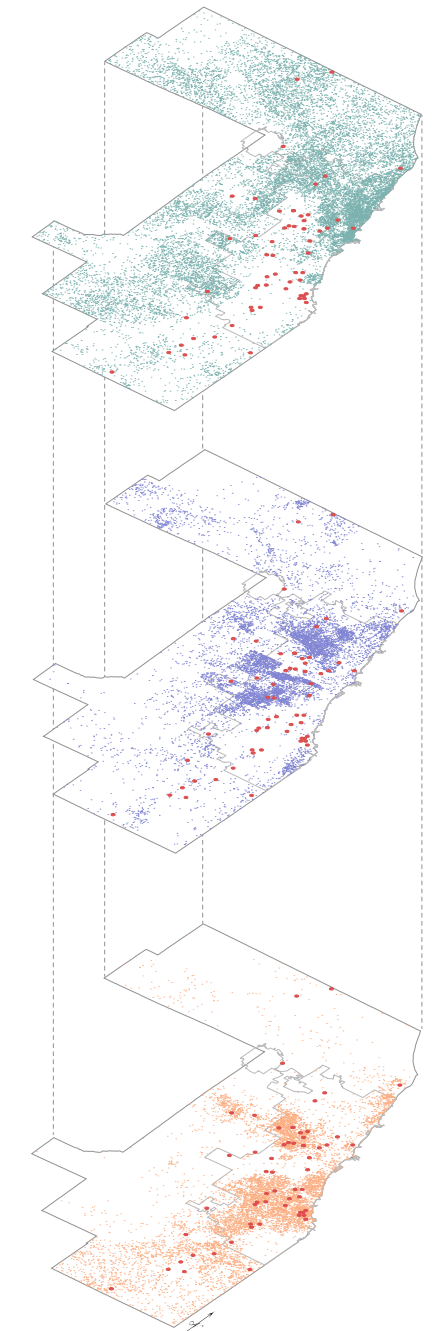


The City of Chicago accounted for approximately 75% of all deaths within Cook County.



## Racial Segregation and Police Violence

Examining the maps of Cook County reveals key relationships between the spatial distribution of police violence and communities of color. Investigating these maps shows that the distribution of **incidents of police violence often cluster in primarily Black and Latino neighborhoods on the south side and west side of the county**. There are a minimal number of incidents that occur in predominately white communities. The incidents that do occur in predominately white neighborhoods appear to be outliers, and isolated incidents that are not representative of the overall pattern in Cook County. These maps reveal the intense racial segregation in Cook County and demonstrate how police related fatalities often co-locate in and near communities of color.



● Black 
 ● Latino 
 ● White 
 1 dot = 250 people  
● Locations of Police Homicides 1 dot = 1 incident

# Harris County, Texas

Harris County is the largest metropolitan area in Texas, hosting a population of approximately 4 million. Harris County consists of 34 incorporated municipalities and 29 unincorporated areas, and covers a total land area of about 1,703 square miles. The major city located in Harris County is Houston, Texas. However, unlike all the other counties in this analysis, the Houston city boundaries expand outside of the county's municipal limits making it difficult to identify the specific geography of fatal encounters.

Between the years 2013 and 2015, Harris County experienced a total of 58 total police-related fatalities.

**The City of Houston accounted for approximately 86% of all total deaths within the county.**

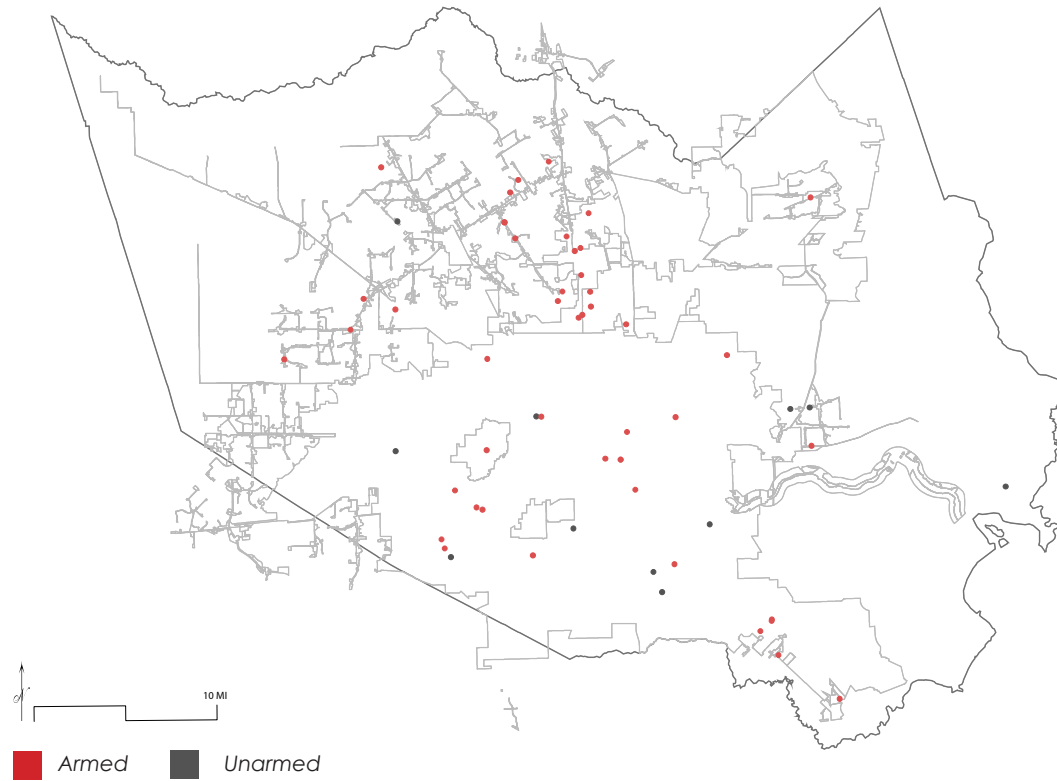
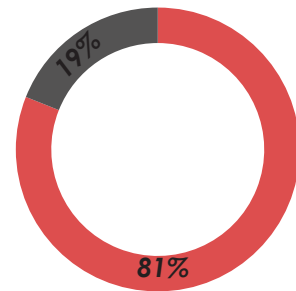
According to this dataset, 47 of the 58 victims in Harris County were armed at the time of death. This statistic (81%) is only slightly higher than the national dataset level which indicates that approximately 77% of all victims were armed at the time of death.

**There were two law enforcement agencies that accounted for a majority (or about 77%) of the total number of police related deaths in Harris County.**

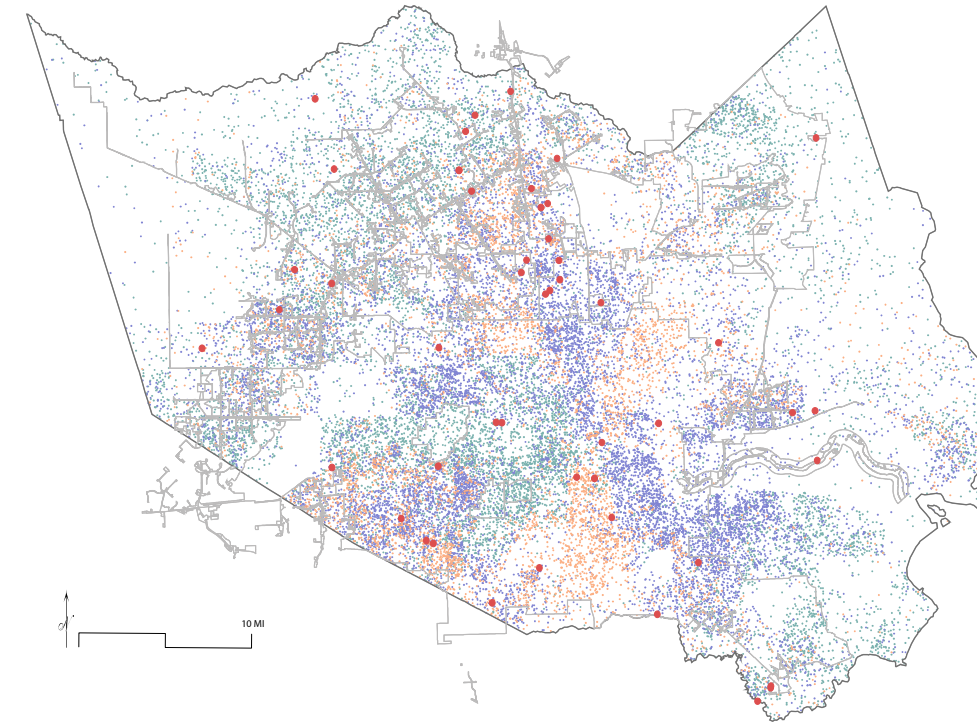
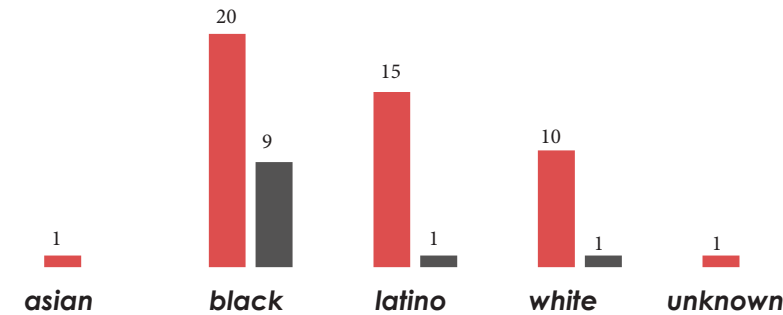
## Fatalities by Police Department

Houston Police Department - 35

Houston Sheriff Office - 10

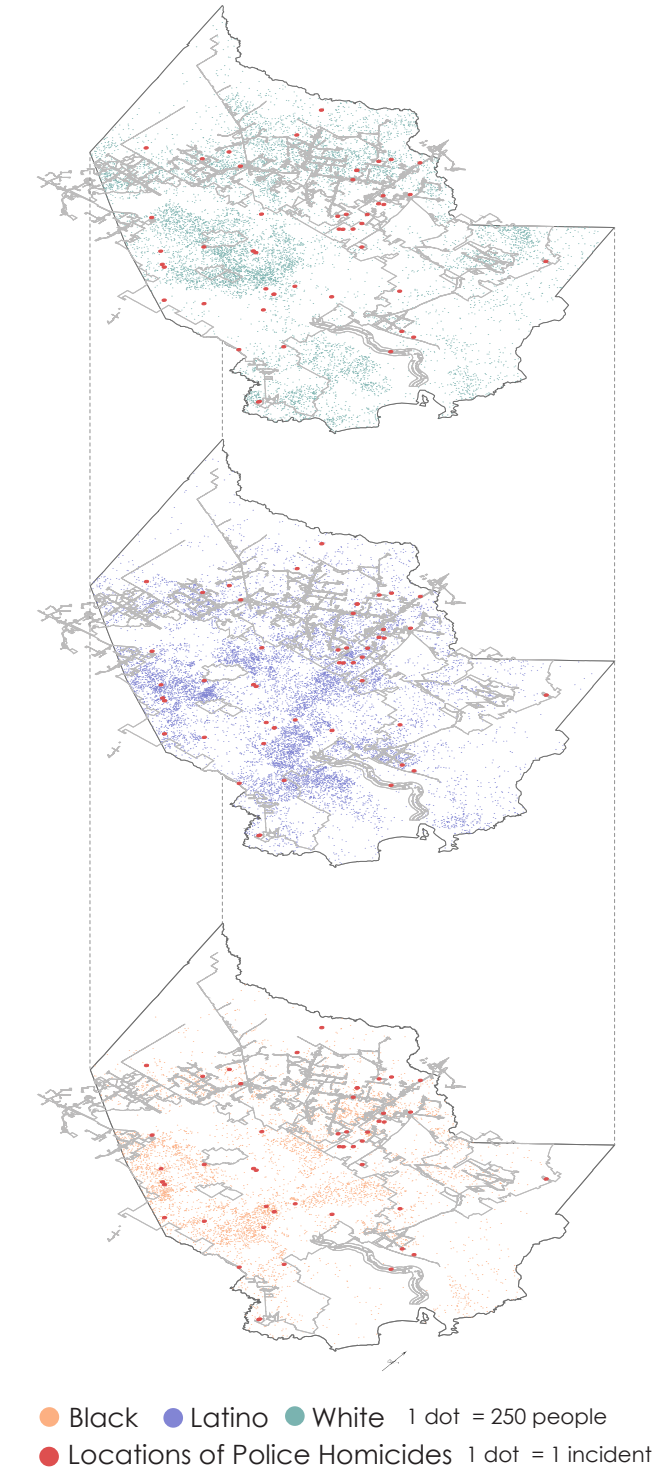


**Between the years of 2013 - 2015, the City of Houston accounted for a total of 50 police related deaths, the highest of any city in America.**



## Racial Segregation and Police Violence

The sprawling nature of Harris County makes it difficult to identify key spatial relationships between police use of force and racial segregation. Although the Harris County geography is vast, there are still areas that show intense racial segregation along municipal boundaries. Although most incidents are spread throughout Harris County the same communities seem to be overwhelmingly affected by police violence. Examining the map series shows concentrations of incidents occurring in predominately Black and Latino communities and not as much in white neighborhoods in Harris County. Furthermore, **approximately 77% or 45 out of the 58 total victims were Black and Latino people.** This overwhelming statistic shows that regardless of the county's sprawling geography, Black and Latino people remain overrepresented as victims of police use of deadly force.



## Miami-Dade County, FL

Miami-Dade County is the largest metropolitan area in Southern Florida, hosting a population of over 2 million residents. Miami-Dade County is made up of 34 incorporated areas, that span over a land area of 1,946 square miles.

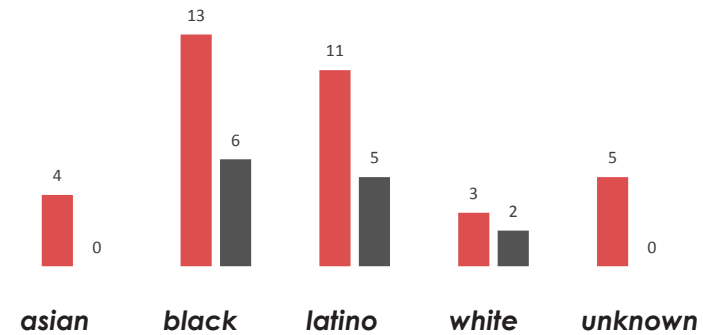
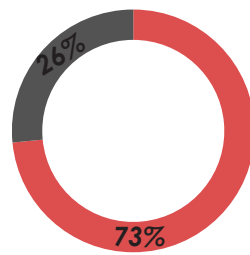
Between the years 2013 and 2015, **Miami-Dade County reported a total of 49 police-related deaths.** Of these 49 fatal encounters, approximately 73% of the victims were armed. This means that about 26% of victims were unarmed making the Miami-Dade county ratio of incidents on par with the national level statistics.

**The City of Miami proper accounted for a total of 27 out of the 49 incidents or about 55% of the total deaths within the county.** The racial groups that were affected the most in Miami-Dade County were African Americans and Latinos with total counts of 19 and 16 fatalities respectively. Overall, this means that **Latinos and African-Americans accounted for approximately 71% of all police related deaths in Miami -Dade County.**

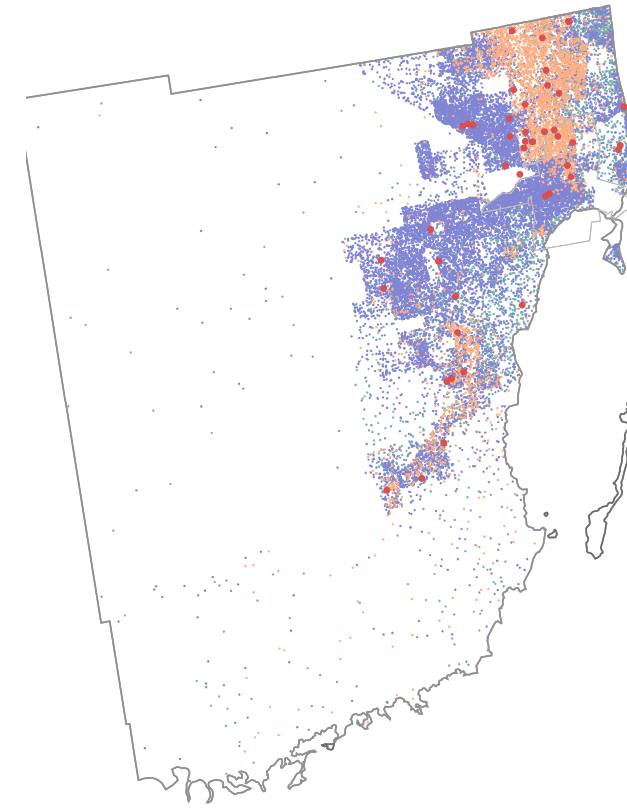
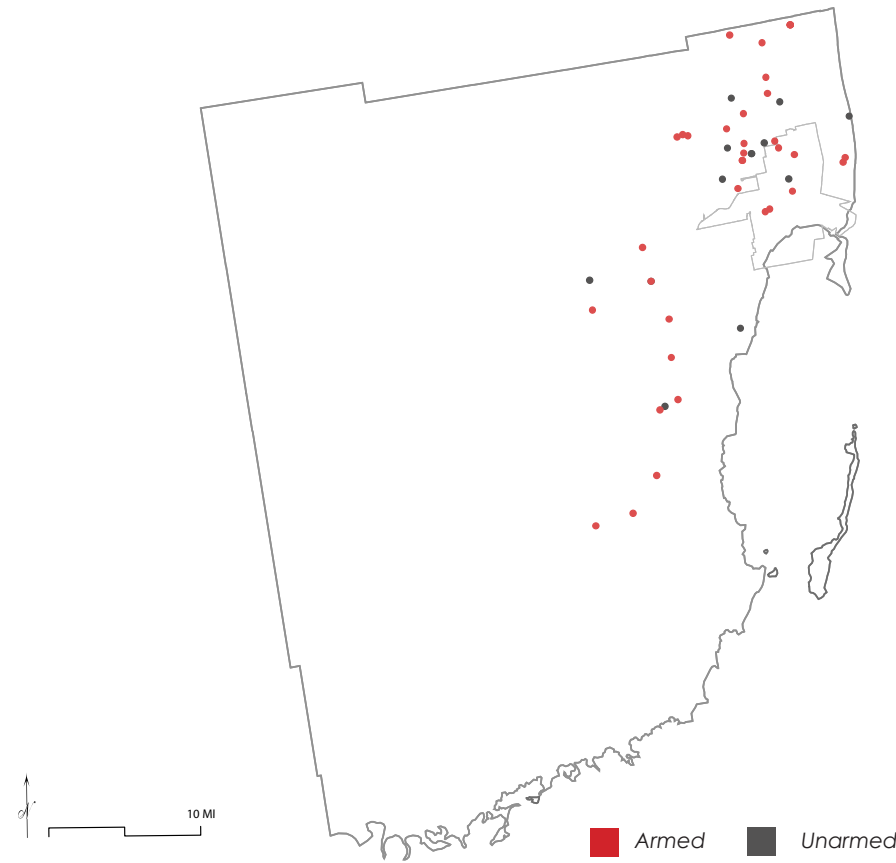
Miami, similar to other counties in this analysis, had one primary law enforcement agency responsible for the majority of these incidents. The Miami-Dade Police Department accounted for 71% of the total homicides within the county.

### Fatalities by Police Department

*Miami-Dade Police Department - 35*



Latinos and African-Americans accounted for approximately 71% of all police related deaths.



### Racial Segregation and Police Violence

Like many other metropolitan areas in the United States, Miami-Dade County is highly segregated based on racial and socio-economic lines. This series of maps shows the extreme racial segregation in Miami-Dade County and highlights that **a majority of fatal encounters with law enforcement occurred in predominately Black and Latino communities.** For instance, in the northeast part of the county, where there is a high concentration of Latino and Black people, there seems to be a clustering of incidents that is not equally represented in majority white neighborhoods. Similarly, in the southern part of the county, where the black population is more prominent there tends to be another group of clustered incidents demonstrating a trend that deadly police activity often follows urban minority populations across the county.

